



Newsletter

1st Edition, July 2021



Letter from the President – Lourens Nel

President's feedback...

2020 and 2021 most certainly have not only made me put aspects of life in review, but also perspective. It realized how we globally dependent upon each other. You are never alone in hard times. However sometimes you must find solutions to your own troubles. The Covid-19 pandemic turned into a second and third wave, leaving us with an evolved Covid-Delta strain, and worldwide traveling ban to and from South Africa. Our economy struggling, our tourism industry collapsed, and our health system under scrutiny. How did and does this impact us? The worse being the losses of life. Lessons learn, indicated we did well, or at least tried under circumstances, but also pointed out our shortcomings and need for improvement. You should struggle first, before you can move forward. And you must make mistakes to learn and improve. The right way leads to a right of way.

Fortunate for us, we had our annual SARWA Educational Conference in March 2021, on a total new level of advanced technology using virtual conferencing. The conference was well attended as usual with the support of our loyal members. And we gained and welcome a few new members to SARWA. The virtual conference has enabled us exploring new avenues towards bringing educational workshops and seminars to our members online. It most probably is not a personal social networking platform compared to conference venues, but it is a new platform with other possibilities.

I attended the 67th International Virtual Education Conference held from 6th June to 9th June 2021, in San Antonio, Texas, USA. Unfortunately, the travel ban did not allow me to travel to America. IRWA made available the conference on a virtual platform as well. Not being there in person, made me realized one cannot not network and obtain the necessary exposure to our chapter if not there in person. And in my opinion the same for our conference, but we must adapt to the changes of time. There were interesting speakers and topics, but I realized we in South Africa stand in no first world country's shadow. We certainly have many obstacles to overcome, but so do they. And as many opportunities they have, so do we.

Our thoughts and condolences to those of our members who have suffered from any experience related to the pandemic. Take care, be safe, and do not lose hope and faith.

A simple, handwritten signature in black ink, appearing to read 'Lourens Nel'.

Kind regards,

Lourens Nel

President



SARWA 24th Annual Education Conference, March 2022

We have been fortunate having a 23rd Virtual Annual Educational Conference in March 2021.

Due to the Covid-19 pandemic, the SARWA Executive Committee Board decided for their member's health and safety to avoid gatherings at the CSIR venue.

With the current Covid-delta status, it appears no further social, nor educational events could be orchestrated by the education and marketing committee for 2021.

Therefore, workshops will be virtual events, which enables our members from other provinces to attend. And it is a cost saving for our members as

well. Although socializing and networking always remain ideal.

We remain excited though and hope to have the 24th Annual Educational Conference 2022 at the CSIR International Convention Centre in Pretoria, next year. The event as always promises great informative and interesting presentations by speakers voluntary contributing towards education within the Right of Way industry.

And the 2022 Annual General Meeting and announcement of new SARWA members.

As well as the 2022 incoming presidential and international

director who will represent SARWA at the 5-8 June 68th IRWA Annual Educational Conference 2022 in Cleveland, Ohio.

"Keep an eye out for the program with details for next year's conference".



JUNE 6 - 9, 2021

The International Right of Way Association's 67th Annual International Education Conference 2021 held in San Antonio, Texas, USA, was a major success. It was a hybrid (Virtual and in-Person) conference, with just over 200 international virtual attendants. IRWA have offered various educational and learning opportunities, as well as the networking events.



IRWA 2021 President, Jake Farrel, SR/WA...

Upcoming IRWA Conference, 68th Annual International Education Conference, 5 – 8 June 2022, Cleveland, Ohio, USA.

**GET
PUB
LISHED**

**RIGHT OF WAY
MAGAZINE**

Send submissions and inquiries to Vivian at nguyen@irwaonline.org

IRWA IS SEEKING SUBMISSIONS FROM MEMBERS AND WELCOMES NEW CONTRIBUTORS. PLEASE FEEL FREE TO SUBMIT:

Articles	Project War Stories
Letters to the Editor	Project Successes
People on the Move	Advertisements
Company News	Obituaries
Industry Insight	

Best Practice When Selecting a Relocation Agent

By Darryl Root, RW/RAC



As the old saying goes, "There's a lid for every pot." Similarly, certain relocation agents may be better suited to help particular displacees than others. Therefore, it is important for the relocation manager to assess an agent's skill level, experience, and other factors before assigning a relocation case. This assessment will help ensure the best fit between the agent and the displacee. As the old saying goes, "There's a lid for every pot." Similarly, certain relocation agents may be better suited to help particular displacees than others. Therefore, it is important for the relocation manager to assess an agent's skill level, experience, and other factors before assigning a relocation case. This assessment will help ensure the best fit between the agent and the displacee.

For example, if the relocation involves a typical single-family residential move, the agent must have sufficient experience with these types of moves to properly assist the displacee. This means that the agent must have a wide range of relocation skills that are applicable to moving families. The relocation manager must consider not only the number of single-family residential moves the agent has previously performed but also any other relevant qualifications.

These other relevant qualifications include applicable training and classes in residential relocation, housing and other related topics. Other relevant questions include: Has the agent contributed to or completed residential relocation planning studies? Does the agent hold a relocation designation from the IRWA?

The relocation manager should also be aware that assigning an agent to a relocation case who does not have the requisite experience or knowledge to complete that relocation could result in an ethical violation under IRWA's Ethical Rules. As per ER 6(a) and (b):

ER 6.3. It is unethical for a member to render right of way services without:

- (a) Having or acquiring the knowledge and experience necessary to render such services competently, or by associating with others who possess such knowledge and experience; or
- (b) Disclosing such lack of experience to the client and subsequently taking all steps necessary or appropriate to render the services competently.

Obviously, the potential for violating IRWA's Ethical Rules makes the assignment of relocation cases to appropriate staff members even more important.

However, simply because the agent has good training and experience, this does not mean he or she is the best choice. What is the track record of the agent in the field? How many of the agent's residential relocations have been completed accurately and on time? How many displacee complaints did he or she receive? Did any displacee file an appeal? In addition to reviewing the agent's experience and education, the relocation manager should examine the agent's intangible qualities as well. Every homeowner, tenant and business owner has individualized needs and a unique personality. In order to meet these particular needs and work well with the displacee, it is important to choose a relocation agent that can quickly "read" the displaced person and adapt to the person's character traits. This will help to expedite and facilitate the move.

Finding the agent with the right "chemistry" for each displacee is not an exact science, but the relocation manager can use his or her experience working with the agent as a guide. For example, if the displacee is elderly or handicapped, an agent with a more calming,



easygoing personality may be better suited for the displacee than an agent that has a "Type A" personality. Conversely, a commercial displacee trying to avoid down time for his or her business, may want a "Type A" relocation agent. The "Type A" agent may be better suited to quickly assess the company's needs and give advisory services on the most advantageous type of move for the business. This type of agent may be better at dealing with multiple vendors providing services to the displacee and processing their relocation claims simultaneously. (It should be noted, however, that regardless of the agent's temperament, the agent is still responsible to render professional relocation assistance to every displacee he or she works with.

Once the agent has been assigned to the displacee, the relocation manager should carefully monitor the agent's progress with the relocation. Lack of cooperation or complaints can be a sign that the appropriate "chemistry" may be lacking between the agent and the displacee. The relocation manager should discuss the case with the agent and determine whether the displacee is just being unreasonably difficult or whether another agent could be better suited to the displacee.

Although it may take some time to assess and review the agent's qualifications and temperament, the relocation manager has a duty to assign the most well-rounded agent available to assist the displacee. Doing this assessment will expedite the project schedule and help reduce hardships to the displacee.



Darryl Root is a senior right of way project manager for HDR. He has been in the right of way industry for 25 years.

Rights of Way Training Curriculum for 2020 COVID-19 Cancellations

Event	Location	Date	Closure	Cost
SARWA 23 rd Annual Education Conference 2021	Gauteng (Virtual)	4 & 5 March 2021	N/a	Closed
Spatial Information / Map Reading Course	Gauteng	September 2021		Pending
Community of Practice / Rights of Way Training Session	Gauteng	21 October 2021		Pending
Servitude Valuations & Land Rights Acquisition Course (Day 1 Practical, Day 2 Case study)	Gauteng (Virtual)	26 & 27 August 2021		R3,700 Members R4,500

SARWA will keep members briefed to online training events accommodating the above pending courses affected by the Covid-19 pandemic.

Please send an email to info@sarwa.co.za if interested to register for an online course for the event that you wish to attend.

Additional ONLINE courses can be held throughout the remaining of the year and in any Province if there is a demand. To initiate such an event the only criteria is that there must be a minimum of 10 attendants. Additional courses available in this way are:

- Course 100SA – Principals of Land Acquisition
- Course 103 – Ethics in the Right of Way Profession

Registration closure dates are important please ensure you register timeously.

SARWA wishes you a continuous professional development by attending these informative events.

SARWA / Education

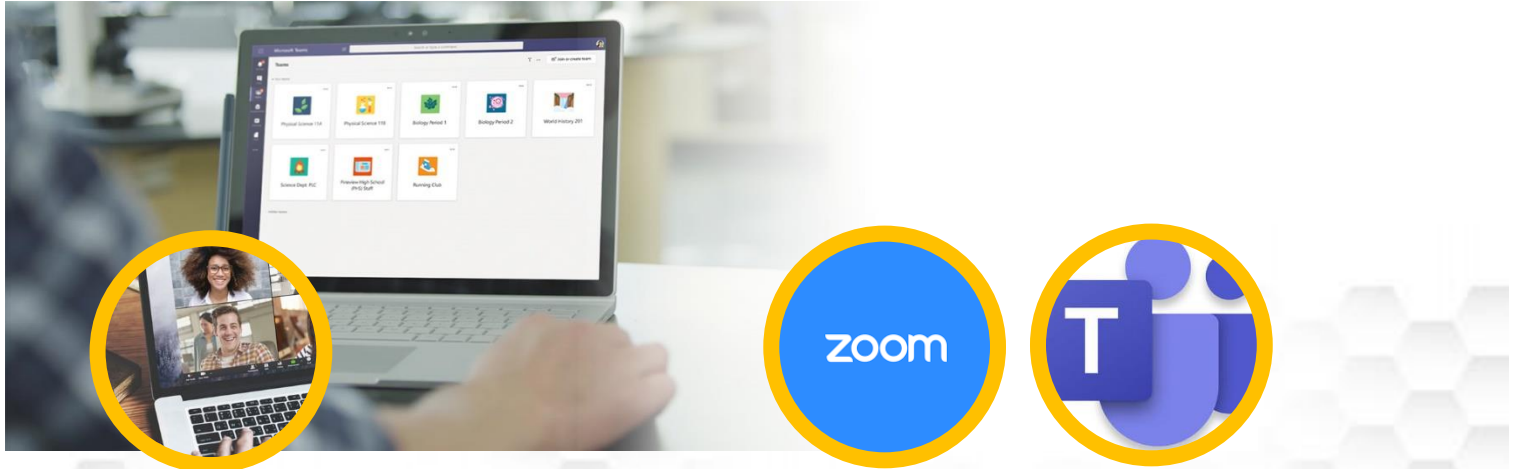
Ernest Grunewald (Chairman: Education Committee)



SARWA ONLINE

EDUCATION

“2021/2 Webinar workshops”....



Course

Land & Rights Education Program

1

Course 213

Conflict Management

2

Course 100SA

Principles of Land Acquisition

3

Course 103

Ethics and Rights of Way

4

Course

Servitude Valuations & Rights (Soon)

5

For more information, forward your enquiry to info@sarwa.co.za

who we are?

The South African Rights of Way Association (SARWA) is a professional member organization comprised of public service infrastructure land & rights practitioners. Since its inception as a not-for-profit association in 1998, SARWA served professionals who acquire, manage, and transfer the land & rights needed for infrastructure. SARWA is also affiliated as a Regional Partner of the International Right of Way Association (IRWA) where together there are nearly 10,000 members that hail from over 15 countries around the world. These members are united by their profession and their commitment to pursuing training and professional development through courses, chapter meetings, seminars, and the annual education conference.

SARWA is a volunteer-driven organization comprised of multi-disciplined professionals employed by private industry and government departments such as:

THE SARWA MANDATE

"SARWA facilitate the networking of the different practitioners and disciplines, involved in and associated with the acquisition of property rights"
"And promotes the development of its members through education and training. Underwrites the fair, ethical, transparent and professional conduct of its members"

OUR VISION

"To be known as the leading Lands & Rights educational and professional registration body in South Africa"

AND MISSION

- Utilize most recent national and international Lands & Rights material, updated for South African legislation, as learner material.
- Register learners on a national data base on several Lands & Rights Professional levels after successfully completing the prescribed courses and practical experience.
- Continue to launch educational courses and seminars throughout South Africa as a means to support continuous development of professionals in the Lands & Rights field.
- Provide a platform for networking with industry associated professionals. Develop programs for the recognition of prior learning.

MEMBERS COMPOSITION



We are considered the unsurpassed source of land and rights educational programs, providing education and networking opportunities to differentiate our members in the professional marketplace. Our industry-specific education and advanced curriculum allows for professional continuous development training which covers Electricity Utilities, Public Departments, Oil & Gas Pipelines and Transportation. SARWA is in the process to be accredited by SAQA to create industry-wide recognition of our designations and certifications, and to elevate the role of right of way professionals by strengthening their industry relevance.

SARWA aim at making a difference in

- the quality standards and ethics throughout the industry and around the globe
- representing projects, landowner, and taxpayer to ensure that landowners are treated fairly, equitably, and uniformly while completing projects on time and within the budget constraints.
- enhancing the quality of lives in the communities we work in, with better and more accessible transportation, energy, and utility systems.

For more information, please visit ww.sarwa.co.za and REGISTER.

EXCO updates & meetings...

The Executive Committee is responsible for the day-to-day planning and management of SARWA, a non-profitable educational organization. The panel consist of members of SARWA, voluntary avail their time and expertise to bring continuing educational material, speakers, and events to the members.

The executive committee members are professionals in bother private, state and state-enterprise institutions.

Annual meetings and workshops help improving the importance of education, and identifying new speakers of interest and training, pertaining the National Rights of Way Industry.

The panel is broken up in individual tasked committees and a chairperson, each responsible for feedback on prior and continuing set tasks. Which include the main SARWA Annual Educational Conference.

The EXCO diary for 2021 is as follows:

Meeting 1	23 April 2021 (Virtual)
Training	Bosberaad, 22 & 23 April 2021 (Mabula Game Reserve)
Meeting 2	23 April 2021 (MS Teams)
Training	24 June 2021 (Policy & Procedures)
Meeting 3	9 July April 2021 (MS Teams)
General	16 July 2021 (MS Teams)
Meeting 4	17 September 2021 (MS Teams)
Meeting 5	12 November 2021 (MS Teams)



SARWA Executive Committee 2021,

MARKETING & COMMUNICATION

Lourens Nel (President & Chair)

Giff Matsabatsa (Secretariat)

EDUCATION

Ernest Grunewald (Chair)

Rio Kgatle (Community of Practice Chair)

Busisiwe Buthelezi

Ziyanda Maqubela

NOMINATIONS & ELECTIONS

Oupa Mashabela (Chair)

Mamokete Mafumo

FUNDS

Ig van Rooyen (Chair)

Viresh Singh (International Director)

Lerato Mokgwatlheng (Treasurer)

PROFESSIONAL DEVELOPMENT

Lungile Motsisi (Chair)

Andries Thebe

ADMINISTRATION

Suz Grunewald (Information)

Dada Nel (Facebook)

Gareth Bester (Website)

21st SARWA Bosberaad, 22-23 April 2021 at Mabula Game Reserve

The Executive Committee had to attend a hybrid virtual Bosberaad on MS teams during 2020, caused by the Covid-19 pandemic lockdowns.

The 2021 Bosberaad was held at Mabula Game Reserve and a great success. The ideas and commitment by the board members was energetic. Everyone knows it's challenging times, and hard work is necessary to maintain the good status of SARWA. This is a voluntary commitment as contribution and passion improving education towards the various professions related to the SA Right of Way industry.

The 2022 Bosberaad will be in Cape Town, with a one-day seminar covering costs. During 2020 lockdown and levels for safety measures and isolation implemented have not allowed for event gatherings.

The intention for the Bosberaad and seminar planned for Cape Town, is to engage and expand exposure to the Western Cape. Which will hopefully support membership growth and initiatives.

As well as educational events supporting the growth and strength of SARWA, which cannot exist as a non-profitable organization without members.

For 2021, the conference, and two workshop sessions which include the COP annual workshops, will support fundraising and member growth.



THE COMPOSITION OF THE EXCO BOARD

- 1 President
- 1 Vice-President
- 1 Treasurer
- 1 Secretarial
- 1 International Director
- 1 CFO (Co-opt)
- 1 Ranking Members
- 1 Community of Practice Chair



ACADEMIC INSTITUTIONS

"Interacting with appropriate faculties and institutions of higher learning offer educational support and membership to students in the academic sector. **The education portfolio** contentiously investigate the feasibility and develop student packages for the Association



REGULATIONS GOVERNING THE RIGHT OF WAY ACTIVITIES

"All existing and new regulations governing the spheres of the right of way profession are distributed for members to understand the industry's regulatory framework".



EDUCATIONAL COURSES OFFERED BY SARWA & IRWA

"SARWA offer courses which ensure all members to understand the purpose of the association, its constitution and principles. These courses are developed by the Education Committee which talk to the unique South African industry, structured, scheduled and marketed properly. With emphasized benefits and accreditation points if any applicable".



IRWA AND/OR INTERNATIONAL VISITS

"Mandates and feedback from international visits on behalf of SARWA are communicated with members to emphasize on the value it adds to the Association. Communication empower the SARWA representative(s) with mandates given by members. The International Director use any of the SARWA platforms to showcase milestones and achievements reached through the association/partnership with IRWA and any other regional Right of Way Associations".



"Keep an eye out for our annual Golf Day in 2021. Invite a colleague within the Right of Way industry or a friend. Or come and make new friends".

The last SARWA golf day was held on 6 November 2019 with 8 players (2 x 4 balls), and the format was Individual Player Stableford (IPS), tee- off at 7:42am off 1st tee box. It was a great day with top golfers enjoying and playing some good golf.



""The Players""



""And the 2019 IPS Winner: **Viresh Singh**""

THE SARWA MANDATE

SARWA facilitates the networking of the different practitioners and disciplines, involved in and associated with the acquisition of property rights.

It also promotes the development of its members through education and training. Underwrites the fair, ethical, transparent and professional conduct of its members.

OUR VISION

To be known as the leading Lands & Rights educational and professional registration body in South Africa.

OUR MISSION

- Utilize most recent national and international Lands & Rights material, updated for South African legislation, as learner material.
- Register learners on a national database on several Lands & Rights Professional levels after successfully completing the prescribed courses and practical experience.
- Continue to launch educational courses and seminars throughout South Africa as a means to support continuous development of professionals in the Lands & Rights field.
- Provide a platform for networking with industry associated professionals. Develop programs for the recognition of prior learning.



other news

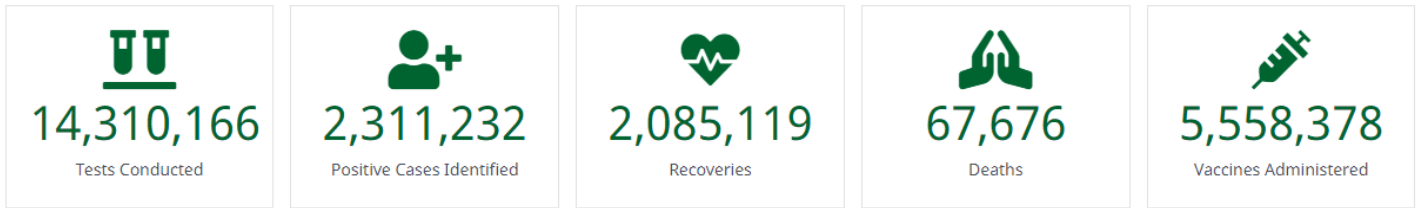
EXCO Bosberaad for 2022 in Cape Town

The Executive Committee Board is reaching out to the Western Cape for workshops and seminars. It was decided to have the annual Bosberaad session in Cape Town next year 2022, combined with a one-day seminar offering four speakers.

SARWA Cape Town seminar 2022

Golf day 2021

Suggestions are welcomed this year for an annual SARWA golf day 2021. Perhaps a specific course or else other sport events interest



Condolences to,

Our condolences to our SARWA members, colleagues, and social networks who have experienced and or lost a close family member, friend and or client to the pandemic. This is a global threat to humankind globally, and extreme health and safety measures are our only option to avoid this illness, pending the vaccination process.

In memory of past president Jacob Boya, Derrick Griffith (Valuer) and Annah Kawaza. Rest in peace....



What else could go wrong?

As if the pandemic has not caused our president sleepless nights convince investors putting their trust in South Africa's economy, the recent riots was the last straw.

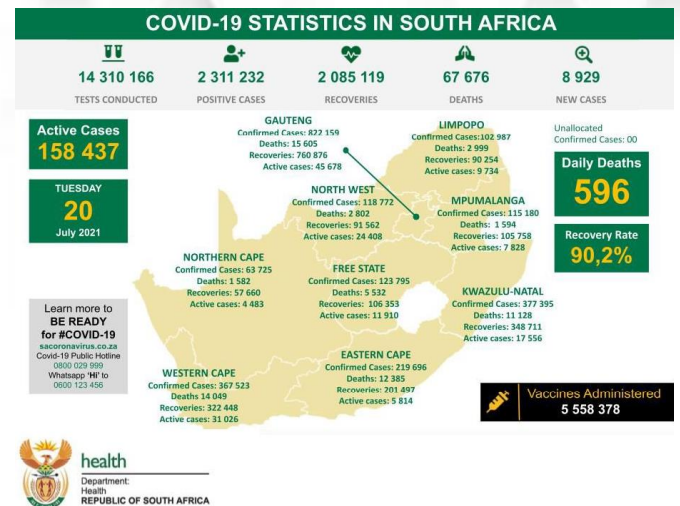


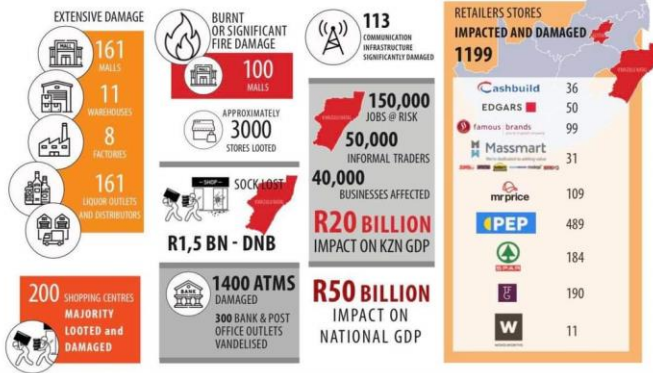
2021 pandemic forecasts?

The pandemic has reached a third wave with staggering increased infections, due to the covid-delta variant. Hospitals flooded and the death toll growing.

We urge our members to practice safe health and risk measures including observance of guidelines, for social distancing, sanitation, hygiene, and use of appropriate personal protective face masks and equipment.

A permitted level of safety as per guidelines set by the National Department of Health.





Looting... then the clean-up...



The 2021 riots and looting pandemic...?

BusinessTech

The domestic GDP recovery from the 2020 crash was dealt another hefty blow last week, with the ramifications to be felt by most South Africans in the coming months say economists at the Bureau for Economic Research (BER). Along with the Covid-19 third wave and the associated harsher lockdown restrictions, the shock events of the past week will put significant strain on economic activity at the start of the third quarter, the group said in a research note on Monday (19 July). GDP is now set for a large contraction in Q3 2021, it said. The group outlined some of the other ways that the economy has been and will be affected going forward.

Household consumption and production

The most immediate and direct impact on GDP will be the loss of household consumption and industrial production in KZN and, to a lesser extent, Gauteng over the past week. Many businesses across different sectors in both the formal and informal parts of the economy were forced to close to ensure the safety of their employees and customers. Some retail chains also temporarily closed their facilities outside the directly affected areas as a precaution.

"While unaffected businesses should be able to reopen relatively quickly once the dust has settled, the shock of the past week may weigh on consumer and business confidence for some time, potentially negatively impacting consumer and firm spending behaviour," the BER said.

Long-term damage

More worrying is the outlook for businesses directly affected by the looting and the extent of the longer-term damage to production capacity, infrastructure, and other facilities, the BER said.

Continue to next page.....

In many cases it is not 'only' cleaning up and restocking that is required but rebuilding entire facilities after arson and other destruction took place. The SA Property Owners Association (Sapoa) estimates that about 800 of their stores have been looted and/or severely damaged while 100 malls have sustained significant fire damage. Sapoa said that the rebuilding of malls that burned down completely could take at least two years, while businesses sustaining structural damages will also be closed for months.

Jobs

Thousands of people who were employed at affected businesses are now also left jobless, with little opportunity to find a job elsewhere. The primary short-term insurer in SA that provides cover against risks such as civil unrest and public disorder, Sasria, is still assessing the damage. Some reports from the insurer put an initial estimate of the damage at R12 billion, while it has also commented that it could cover claims up to R10 billion from its own balance sheet. "Without delving into the intricacies of insurance claims, even successful claims may take some time to be paid out, which further delays the rebuilding. "Furthermore, some businesses may decide not to reopen at all. Outside of the private sector, rebuilding of damaged public sector facilities will put further pressure on already strained provincial and municipal budgets."

Supply chains

Supply chains within South Africa are significantly distorted, and even trade with the rest of the world has been negatively impacted as harbour activity in Durban and Richard's Bay came to a virtual halt last week. The N3 highway between Durban and Johannesburg was closed for almost a week and transport on the Natcor freight rail line linking KZN and Gauteng was halted. "While the reopening of the N3 and a restart of some factories should help, the destruction of some production and distribution facilities and warehouses means that it will take some time before normality returns."

Shortages

The disruption of supply chains and temporary closures of key production facilities as well as panic buying has led to shortages of food, fuel and even medicine in some parts of the country. While South Africa's agricultural production is not concentrated in one province and overall production capacity should be sufficient to meet South Africa's needs, KZN does serve as a key entry point for many imported food products and Gauteng is a key centre for agri-processing, the BER said. "The risk of temporary higher prices and shortages of some key products remains. "The temporary, precautionary closure of South Africa's largest petroleum refinery, Sapref, and scheduled delivery disruptions have led to fuel running out in some parts of KZN and Gauteng. "Again, on a national level, South Africa's fuel supply should remain sufficient and local shortages should also be replenished relatively quickly. "However, localised shortages contribute to supply-chain disruptions and hamper the distribution of other goods."

Covid-19 and medicine

Many of the looting activities could turn out to be Covid-19 super-spreader events, the BER said. It warned that the vaccination rollout in KZN experienced a setback over the past week as many sites were forced to close. "For example, for one 24-hour cycle last week, private sites in KZN administered only four vaccines." Many medicine warehouses and distributors were looted, including Cipla's manufacturing plant in Durban. "Bhekisisa estimates that chronic medicine, such as insulin and antiretroviral drugs, for almost half of KZN's chronic patients, has been stolen during the looting," the BER said.

Consumer and business confidence

While the looting and violence were largely isolated to just KZN and Gauteng, it will depress consumer and business confidence across South Africa. This could have negative implications for consumer spending as well as capital expenditure outlays, the BER said, "The adverse impact on especially private sector fixed investment could last well beyond the initial shock to the economy last week. "While the third wave would have been a setback to confidence, with the vaccination rollout finally gathering steam and even some long-awaited progress on the structural reform front, confidence may have been on the mend before last week."

Brand South Africa

Last week's protests received plenty of international media attention and stand to hurt South Africa's image as an attractive investment destination and 'gateway to Africa'. Beyond the short-term impact on financial markets, with the rand initially sliding significantly last week, this could hurt foreign direct investment flows as well as international tourism to South Africa, the BER said. The domestic GDP recovery from the 2020 crash was dealt another hefty blow last week, with the ramifications to be felt by most South Africans in the coming months say economists at the Bureau for Economic Research (BER). Along with the Covid-19 third wave and the associated harsher lockdown restrictions, the shock events of the past week will put significant strain on economic activity at the start of the third quarter, the group said in a research note on Monday (19 July). GDP is now set for a large contraction in Q3 2021, it said.

SARWA Community of Practice 2021

With the appearance of the Covid-19 pandemic, most of our educational workshop venues for the year 2020 had to be cancelled. The education committee will have to consider options such as online webinars. For 2021 arrangements will be integrating hybrid webinar workshops, which enable trans-border education nationally to SARWA members, aimed at growing towards Cape Town, Durban, and Port Elizabeth perhaps. The EXCO board have decided to have the 2022 Bosberaad in Cape Town and host a seminar. The Covid-19 certainly have created a new world and culture for online interaction. It is more cost effective and make it possible for more members able to attend, as well as a safer environment. SARWA learned valuable lessons through the reality of the pandemic and made provision for 2021. The COP chairs work on suggestions and new ideas, how we could bring interesting and advanced education to our SARWA members.

SUPPORT DURING 2021

sasol



GAUTENG PROVINCE
Department: Roads and Transport
REPUBLIC OF SOUTH AFRICA



Eskom



HOW MUCH IS YOUR PROPERTY WORTH?

"UniqueCo Property Valuers serve their clients for life."

[Request a Valuation](#)

CALL US: 086 199 0003

A great thanks to our administrative support team....

Suz Grunewald, Dada Erasmus-Nel, Rina and Ig van Rooyen.



Advertising packages available

Send enquiry to info@sarwa.co.za for more information



Platinum Advertising

- ✓ 23rd SARWA Conference Exhibition Stand
- ✓ 23rd SARWA Conference Program Logo Display
- ✓ SARWA Annual Newsletter (2 Editions)
- ✓ COP Workshop Exhibition Stand
- ✓ COP Workshop Program Logo Display
- ✓ SARWA Website Advert Page
- ✓ Exhibition at SARWA Annual Golf Day



Gold Advertising

- ✓ 23rd SARWA Conference Exhibition Stand **(Either)**
- ✓ 23rd SARWA Conference Program Logo Display
- ✓ SARWA Annual Newsletter (2 Editions)
- ✓ SARWA Website Advert Page
- ✓ Exhibition at SARWA Annual Golf Day **(Or)**



Diamond Advertising

- ✓ 23rd SARWA Conference Program Logo Display
- ✓ SARWA Annual Newsletter (2 Editions)
- ✓ SARWA Website Advert Page

 info@sarwa.co.za

 www.sarwa.co.za

